

Benzie Central Schools

Schematic Design

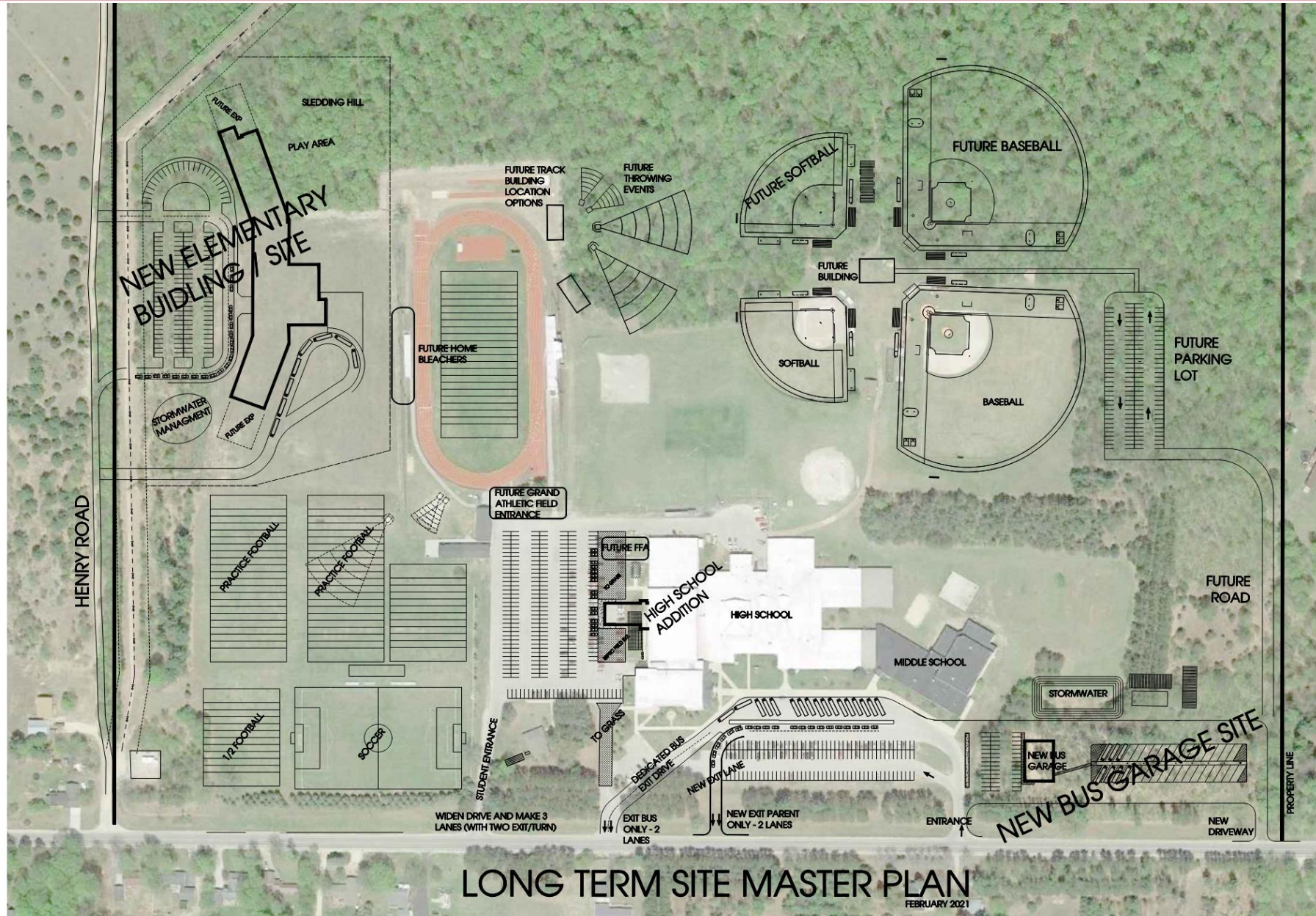
March 8, 2021

Kingscott

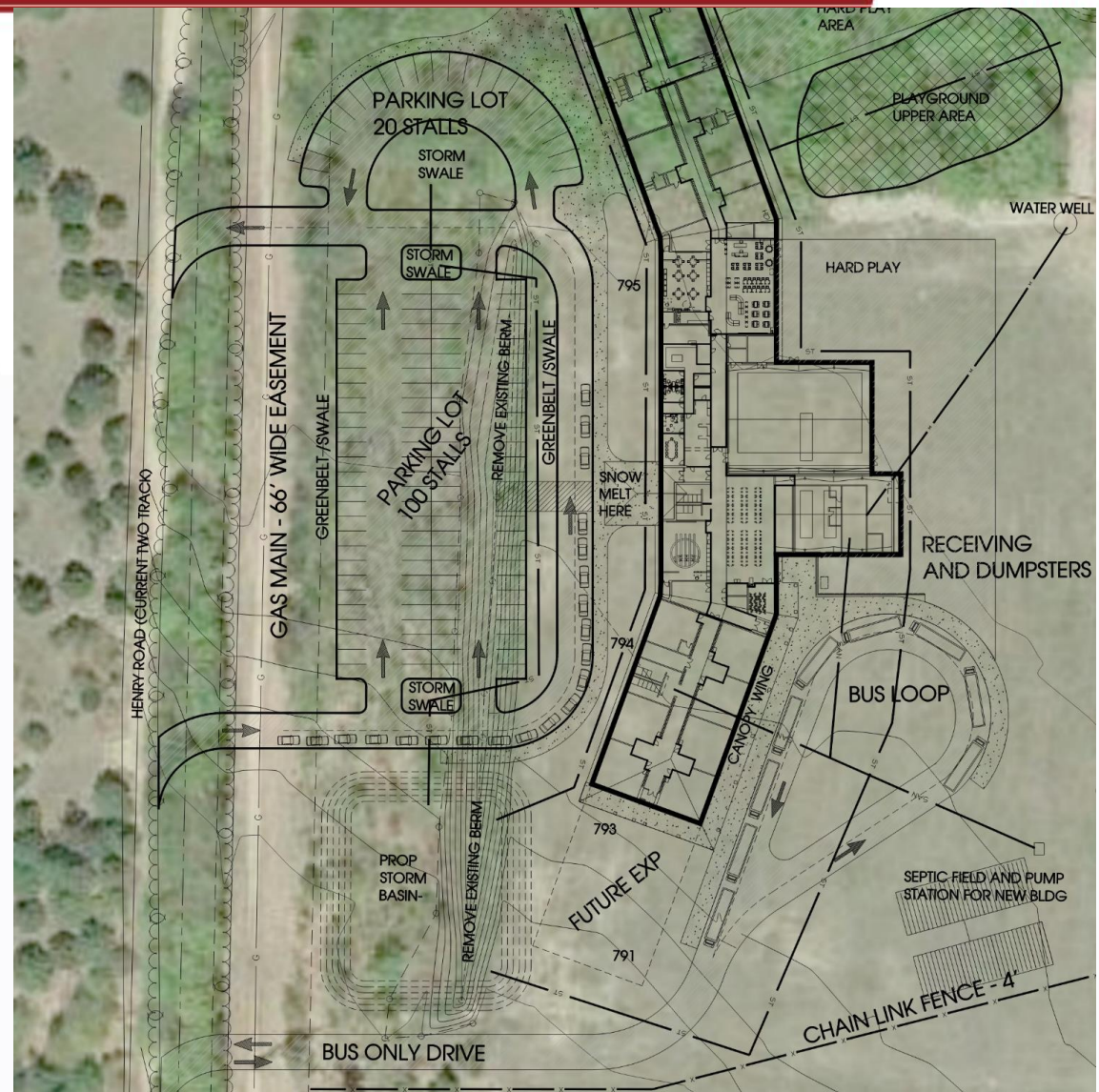
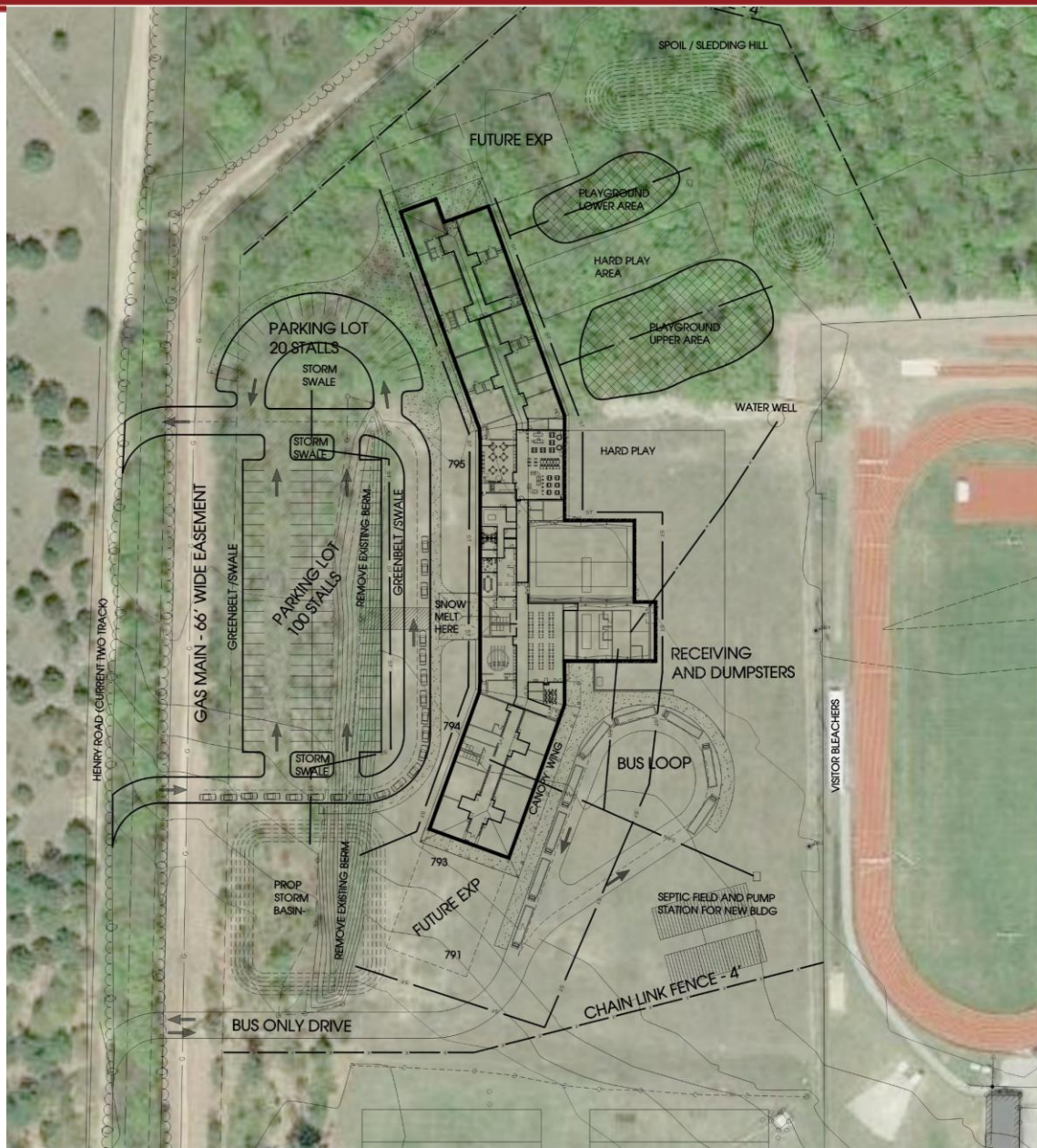
Wolgast
CORPORATION

- Schematic Design Presentation
 - Site Masterplan
 - New Elementary
 - Lake Ann Elementary Additions
 - HS Weight Room Addition
 - New Bus Garage
- Construction Update

Site Master Plan



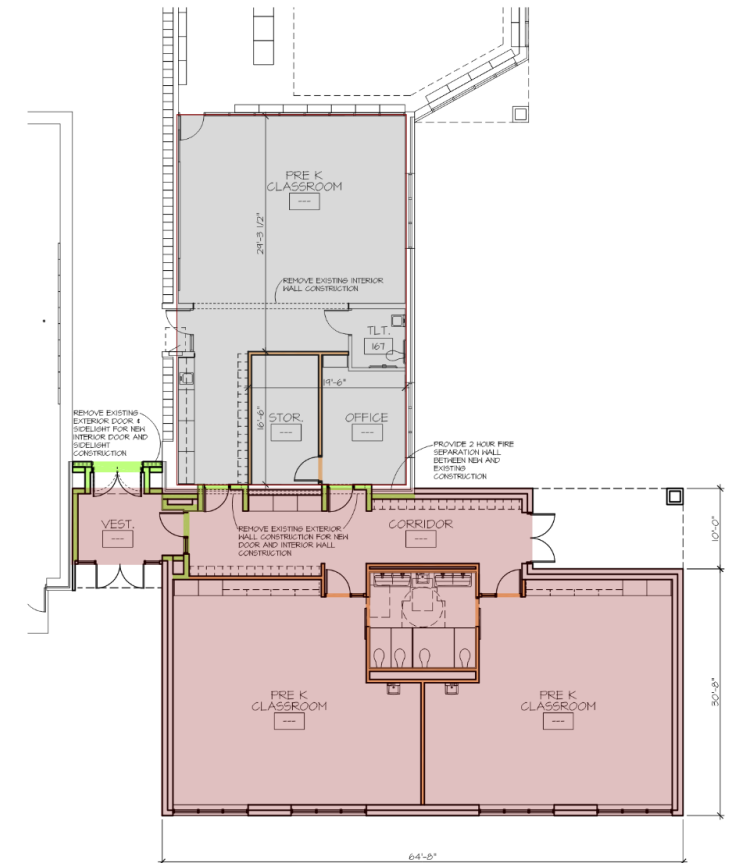
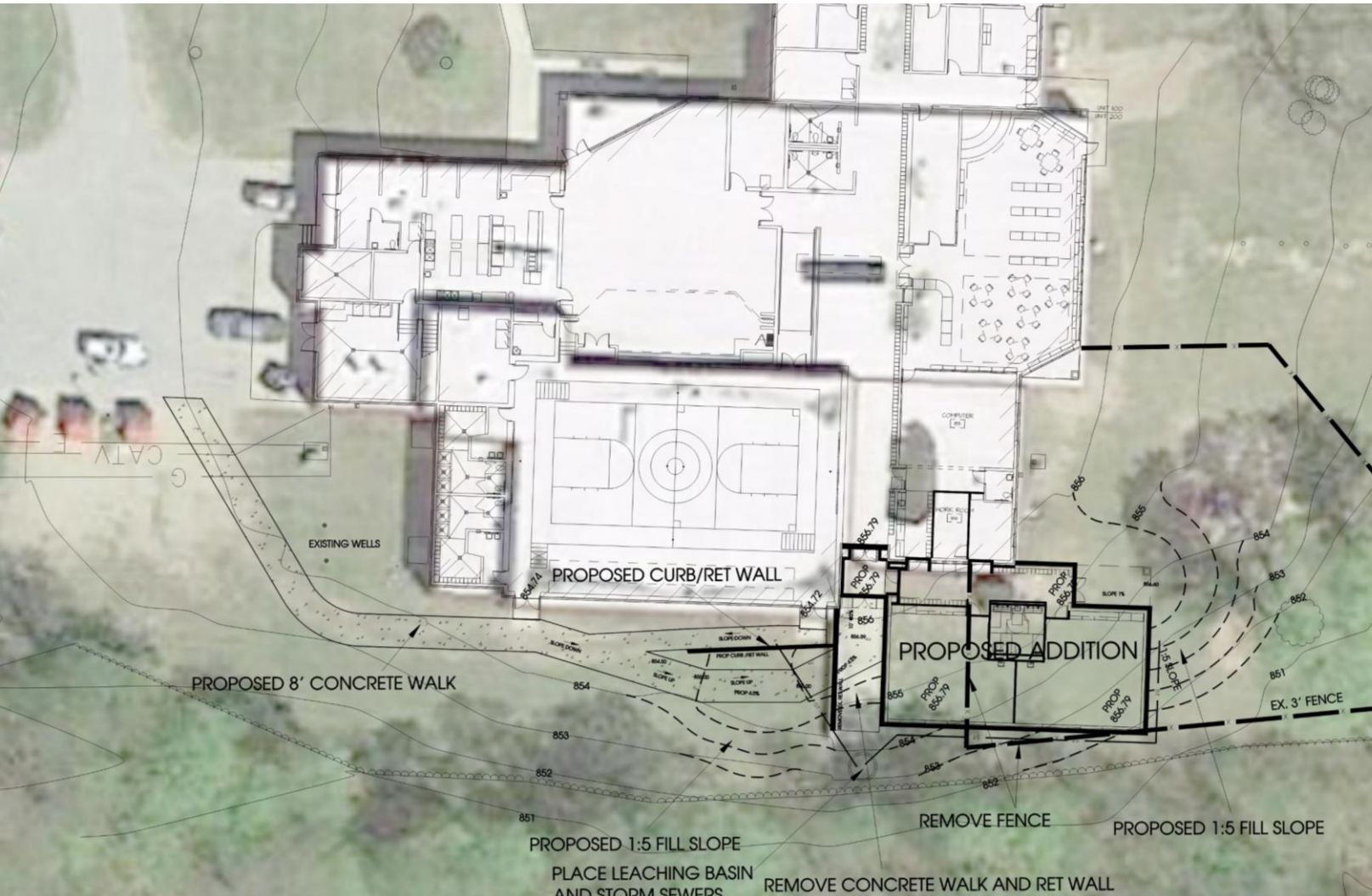
New Elementary – Site Plan



New Elementary – Floor Plan/Exterior

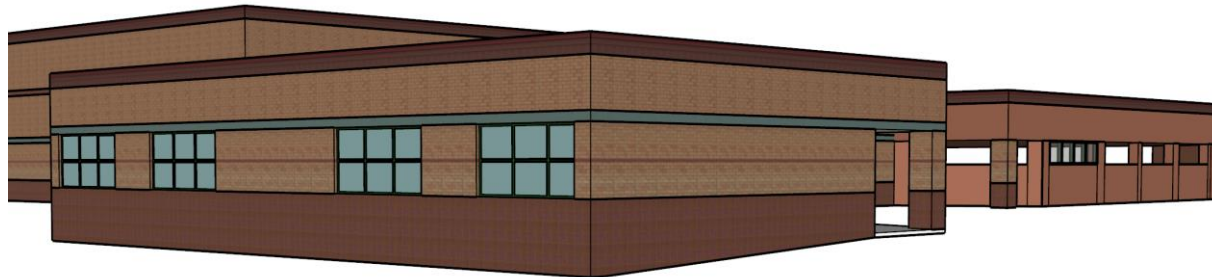
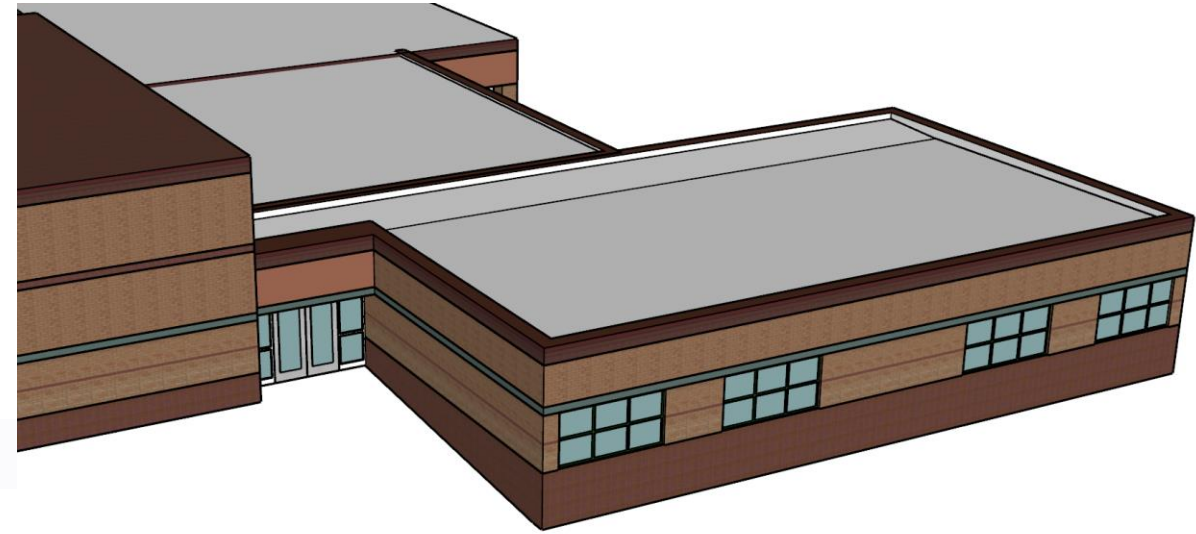
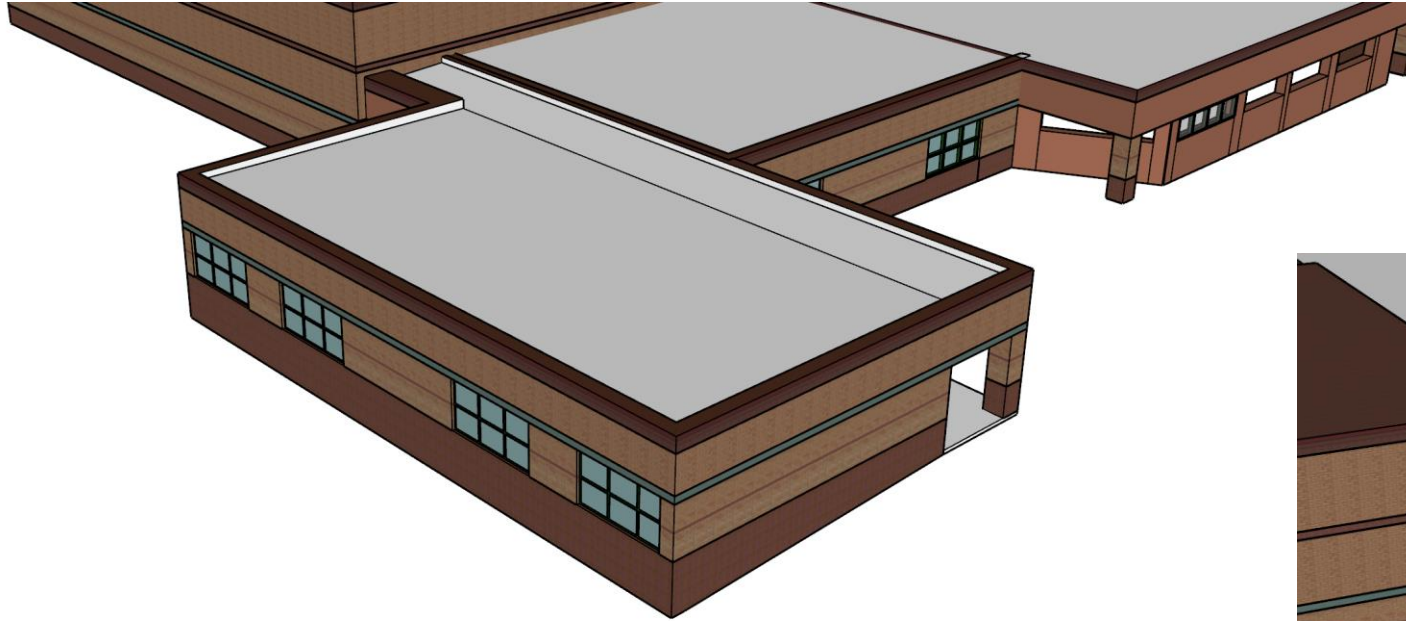


Lake Ann Elementary – Site Plan/Floor Plan

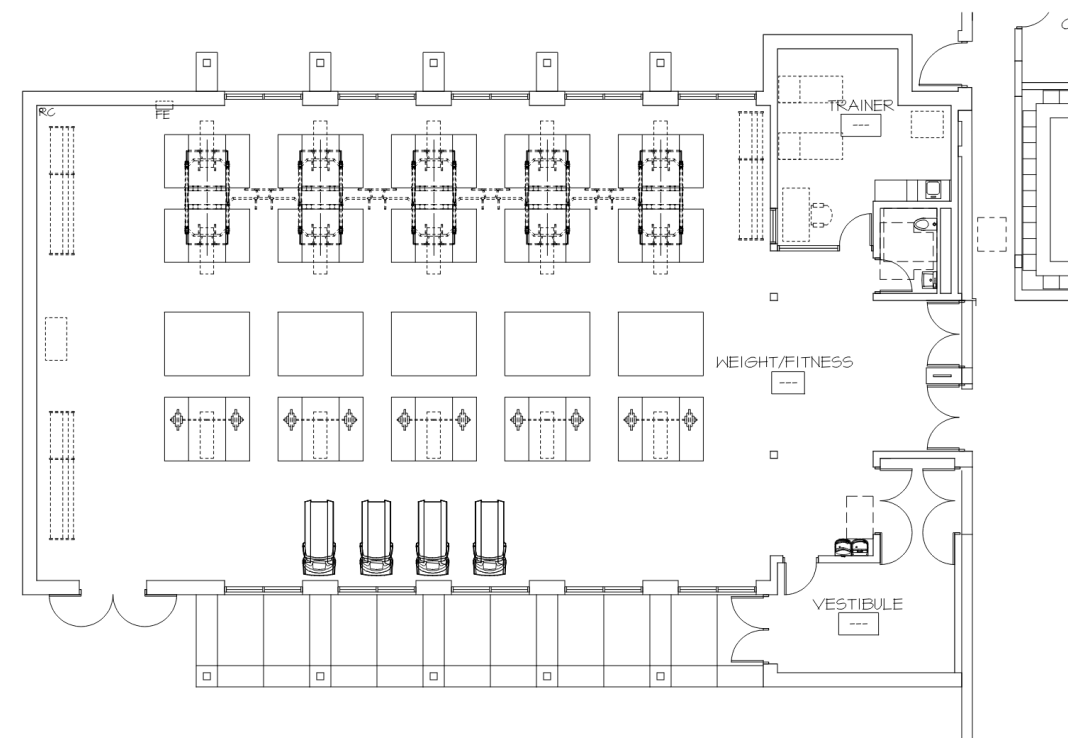
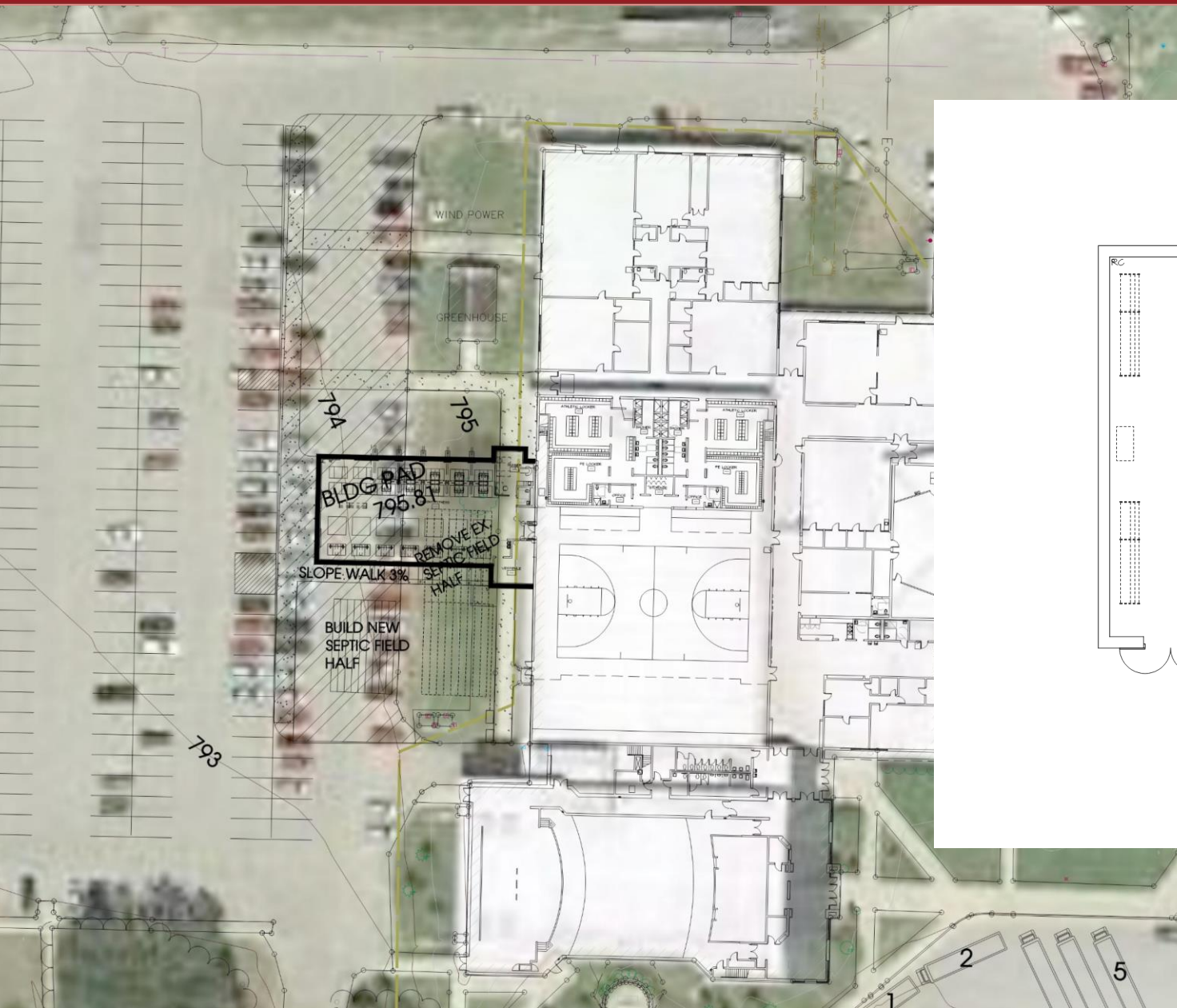


FLOOR PLAN

Lake Ann Elementary – Exterior



HS Weight Room – Site Plan/Floor Plan

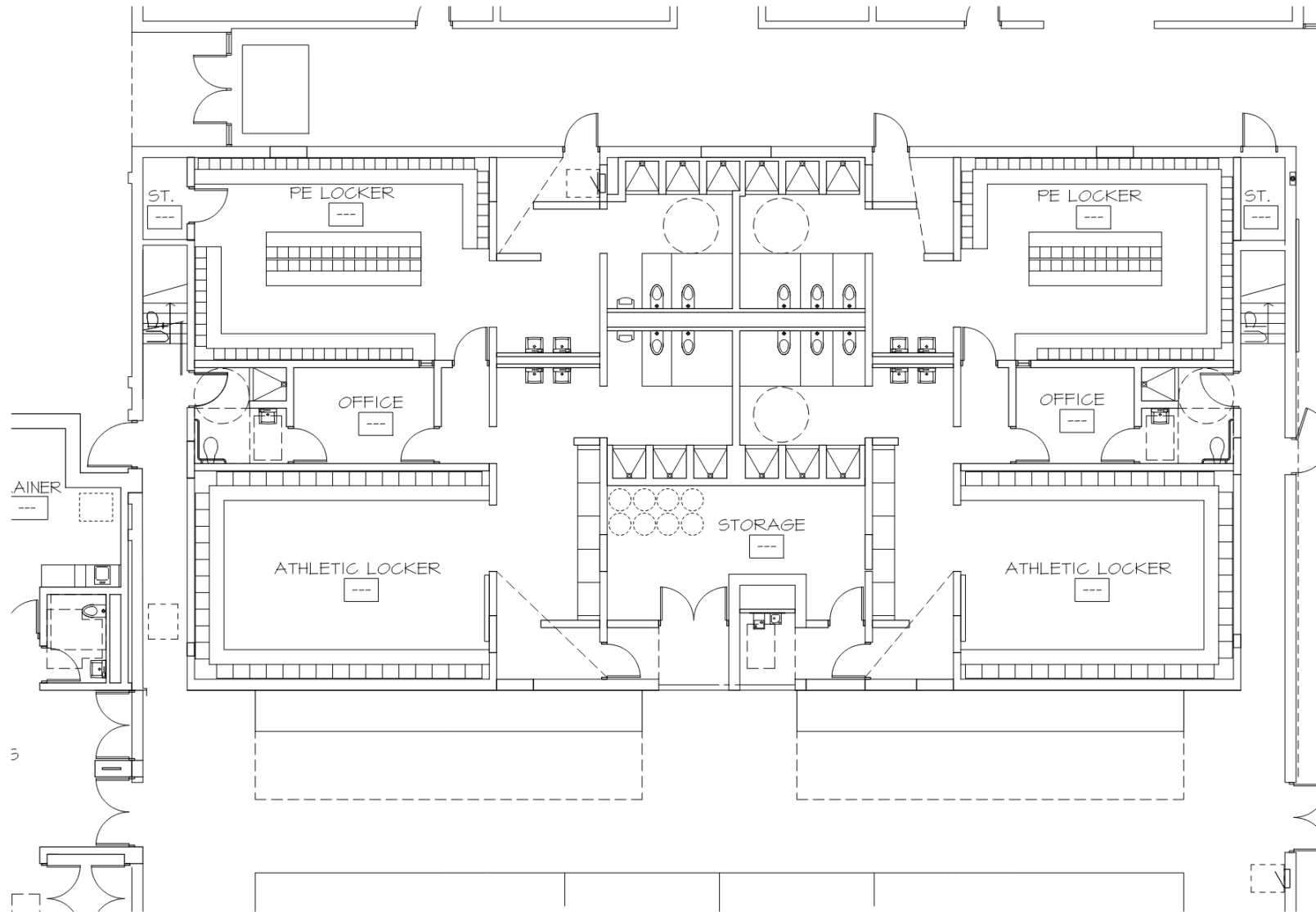


FLOOR PLAN

HS Weight Room – Exterior

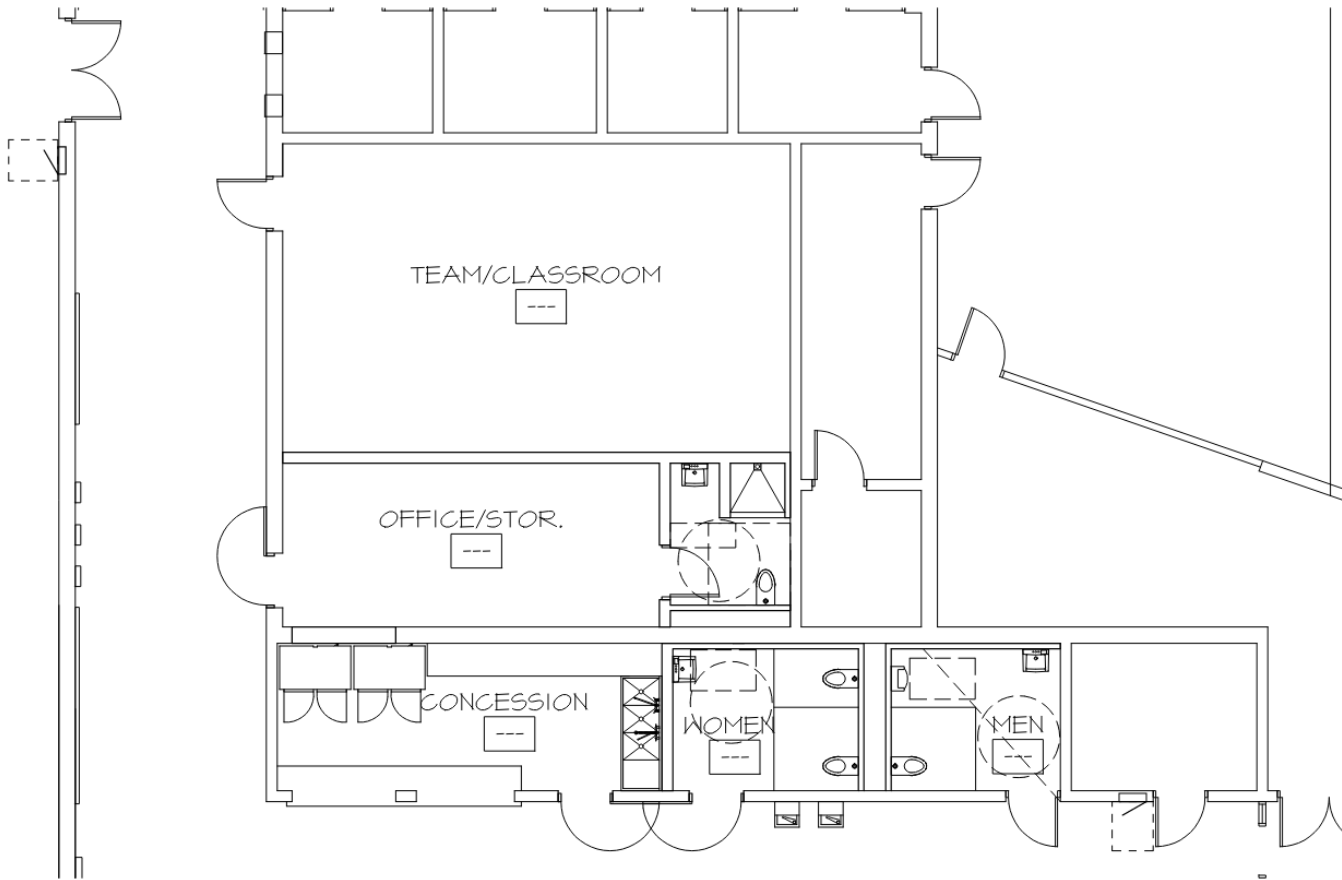


HS Locker Room – Floor Plan



FLOOR PLAN

HS Concessions – Floor Plan



FLOOR PLAN

Construction Update

- HS/MS Roofing
- Football Stadium Lighting
- Lake Ann Boiler Replacement
- Betsie Valley Parking Lot Upgrades

Thank You