

# Benzie Central Schools

**Community Presentation**  
**Schematic Design**

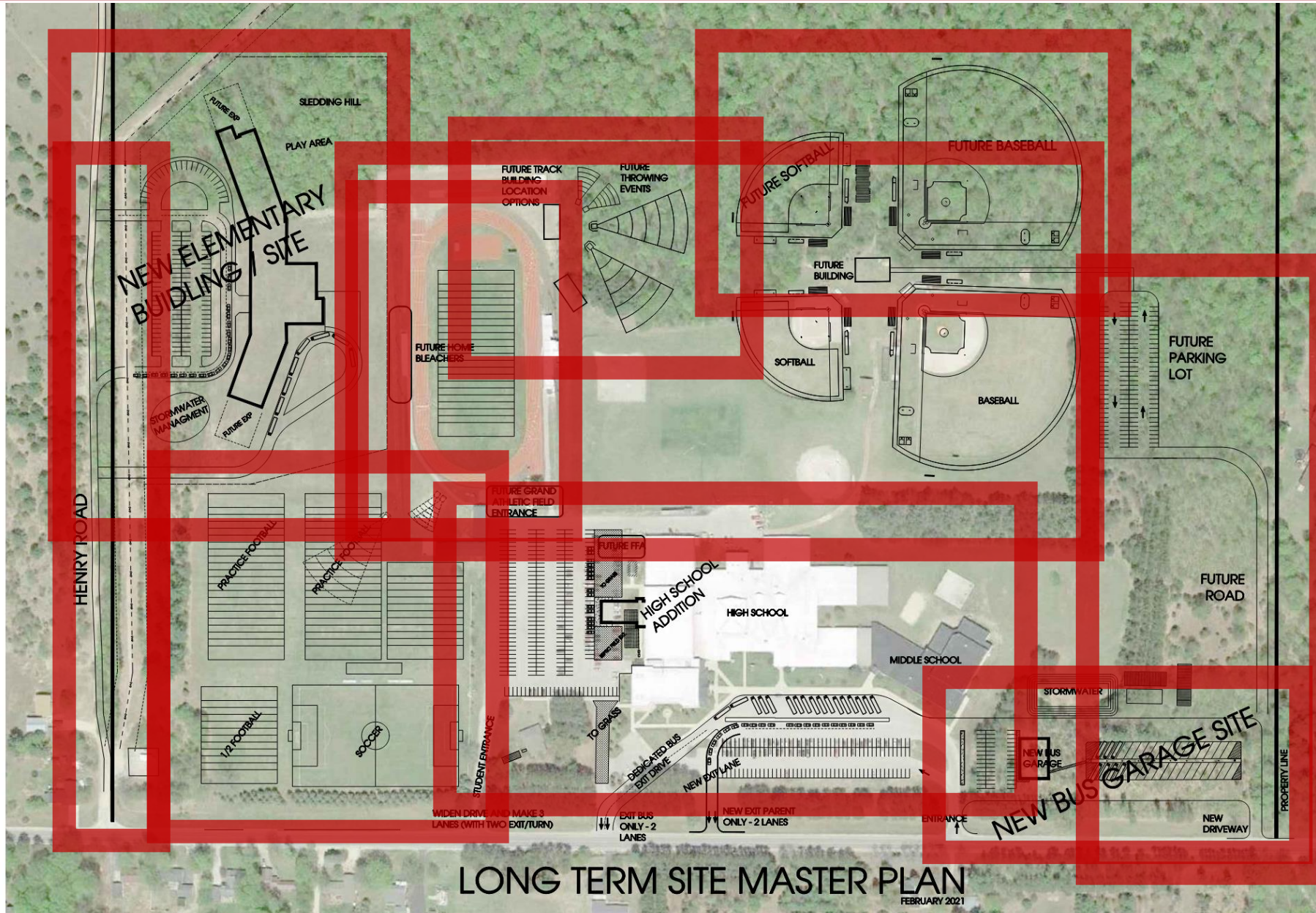
April 12, 2021



- Schematic Design Presentation
  - Site Masterplan
  - New Elementary
  - Lake Ann Elementary Additions
  - HS Weight Room Addition
  - HS Locker/Concessions Remodeling
  - New Bus Garage

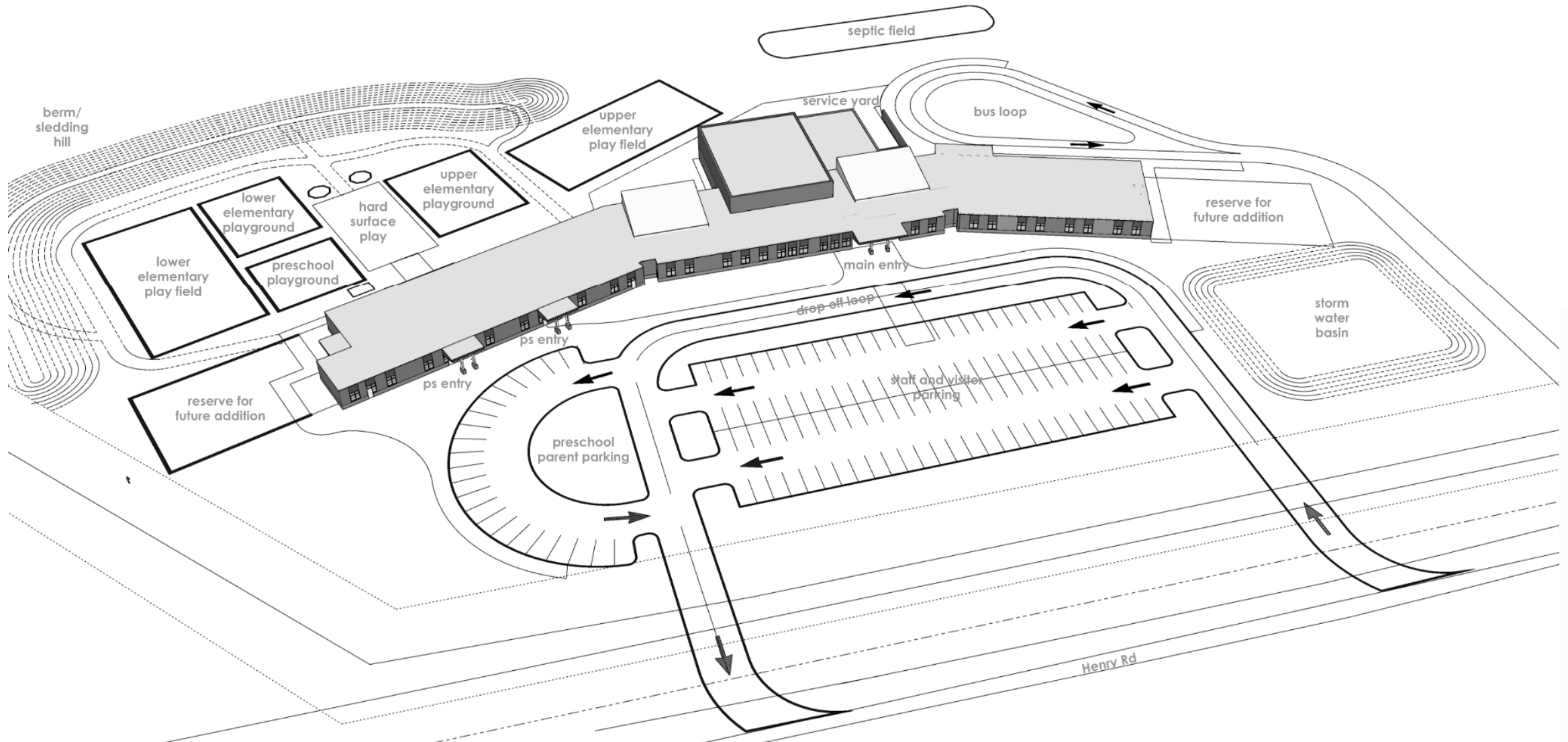


# Site Master Plan

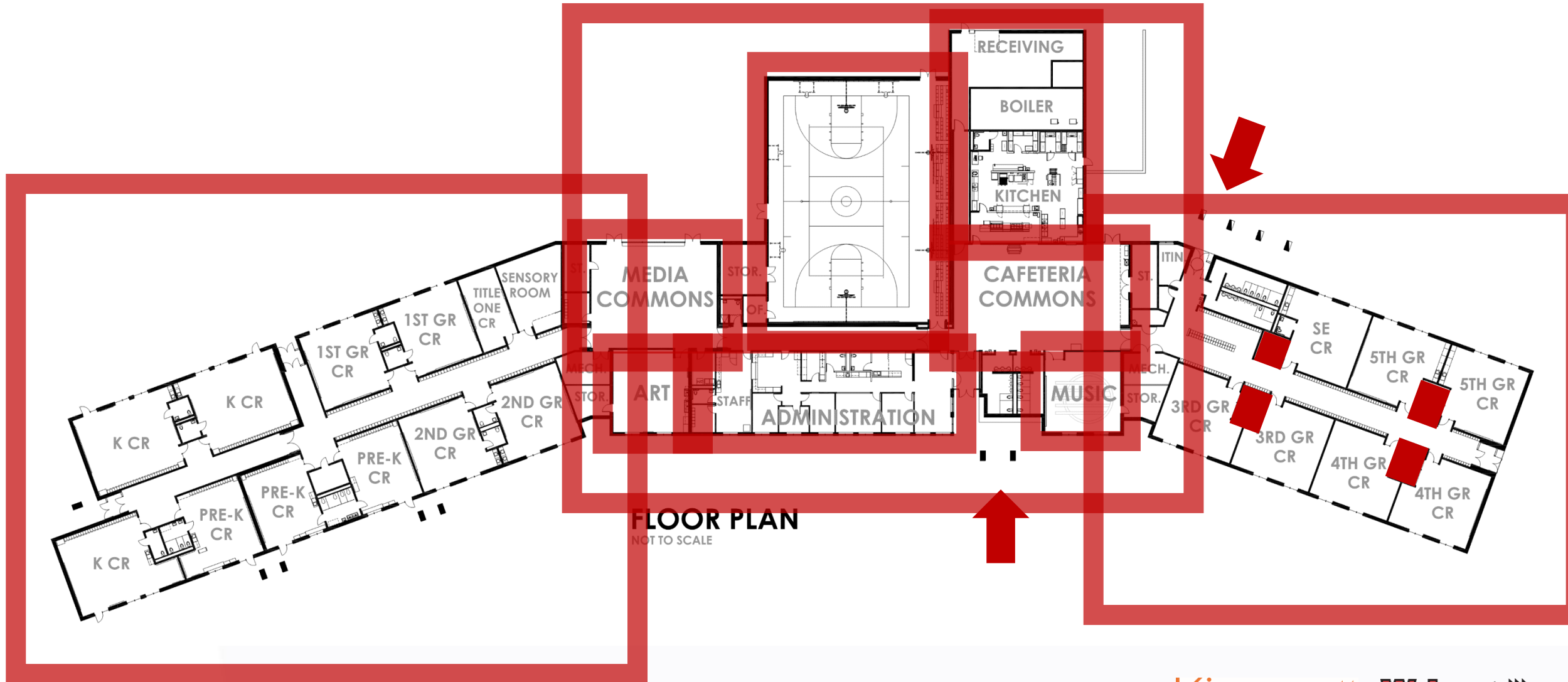




# New Elementary – Site Plan



# New Elementary – Floor Plan

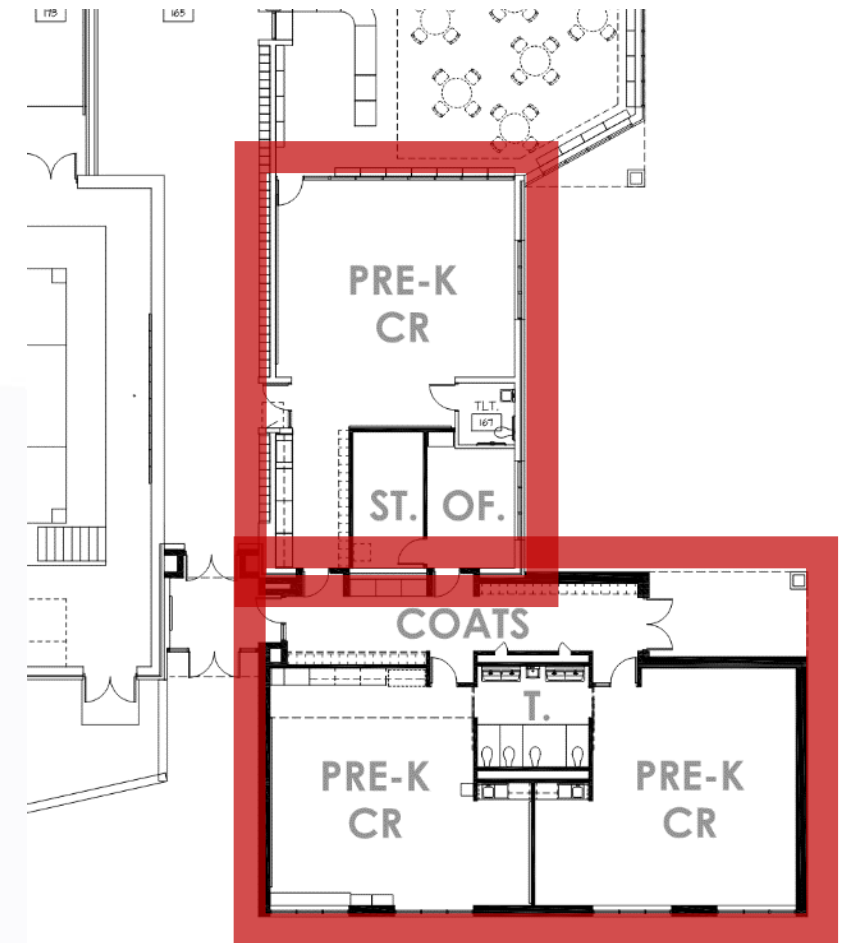
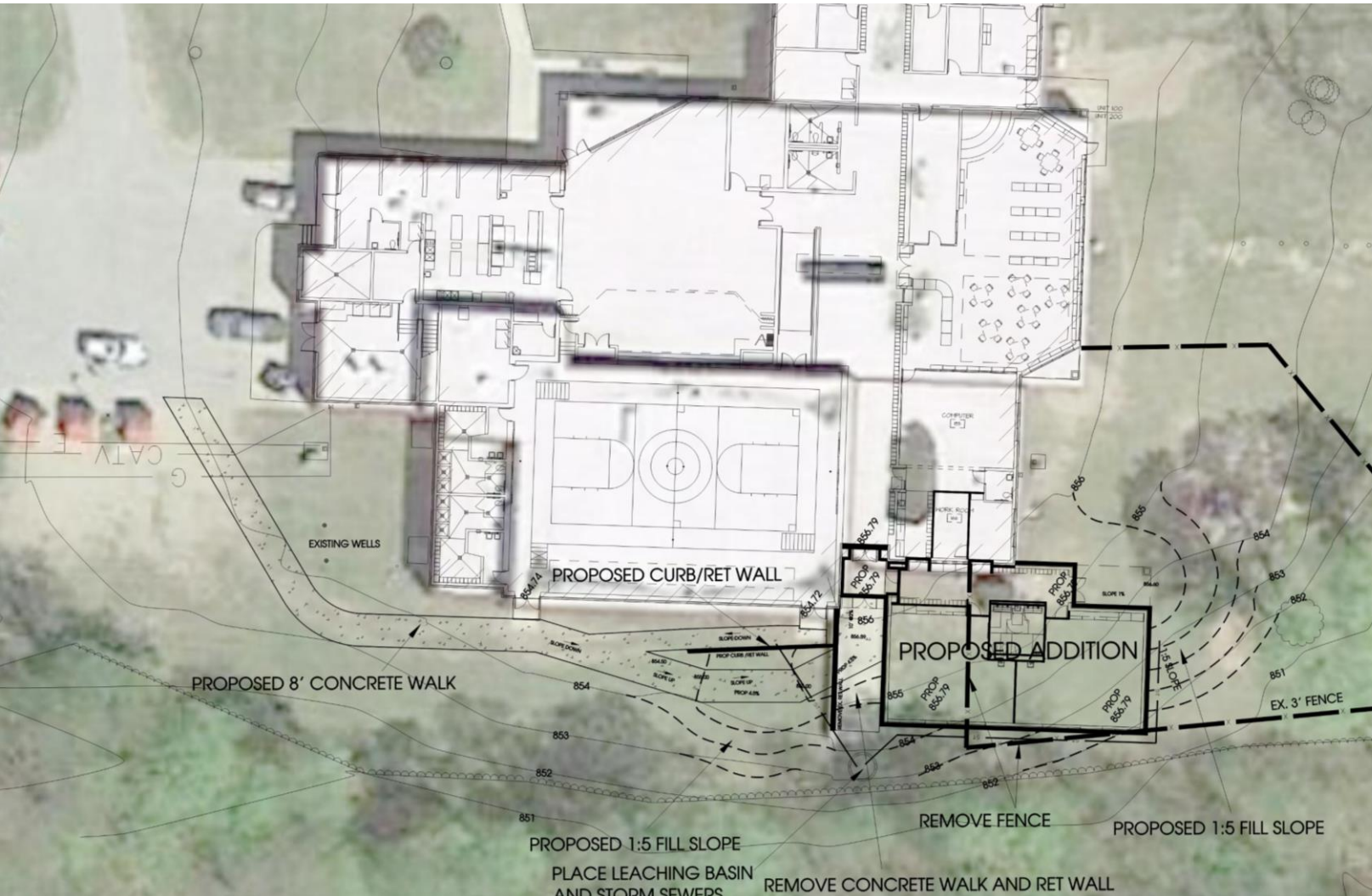


# New Elementary – Exterior Perspectives





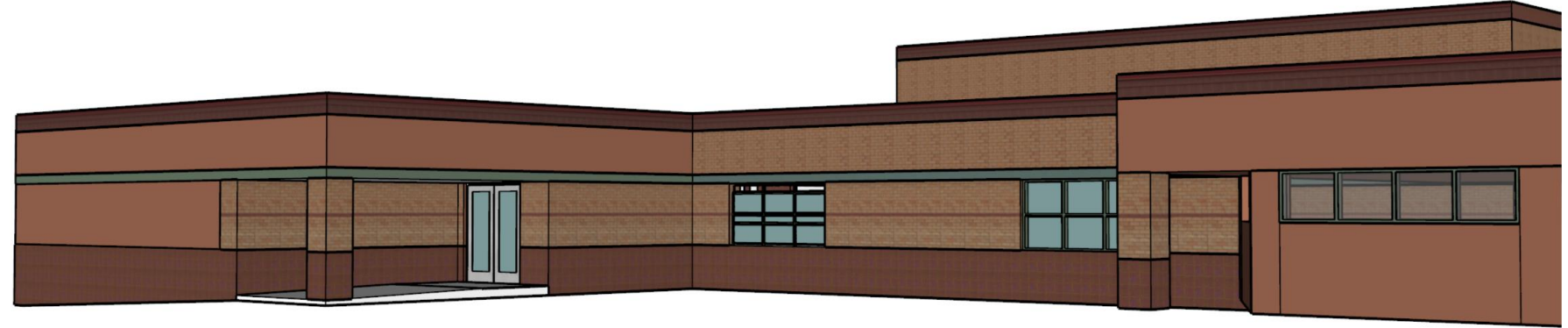
# Lake Ann Elementary – Site Plan/Floor Plan



## FLOOR PLAN

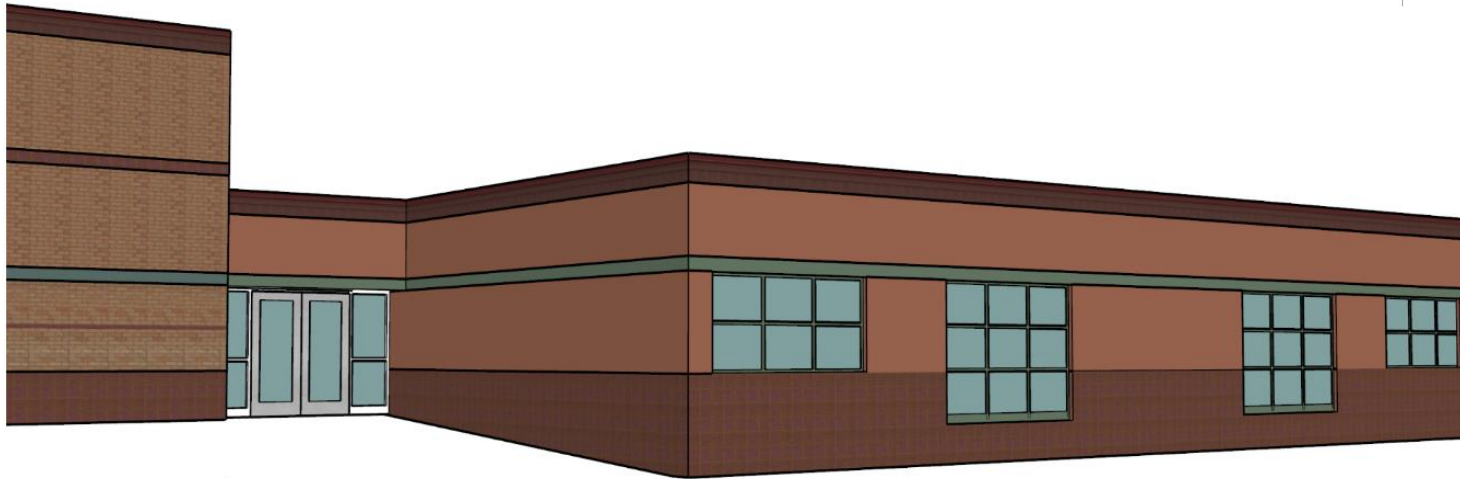
NOT TO SCALE

# Lake Ann Elementary – Exterior Perspectives



addition | existing

PERSPECTIVE LOOKING SOUTHWEST

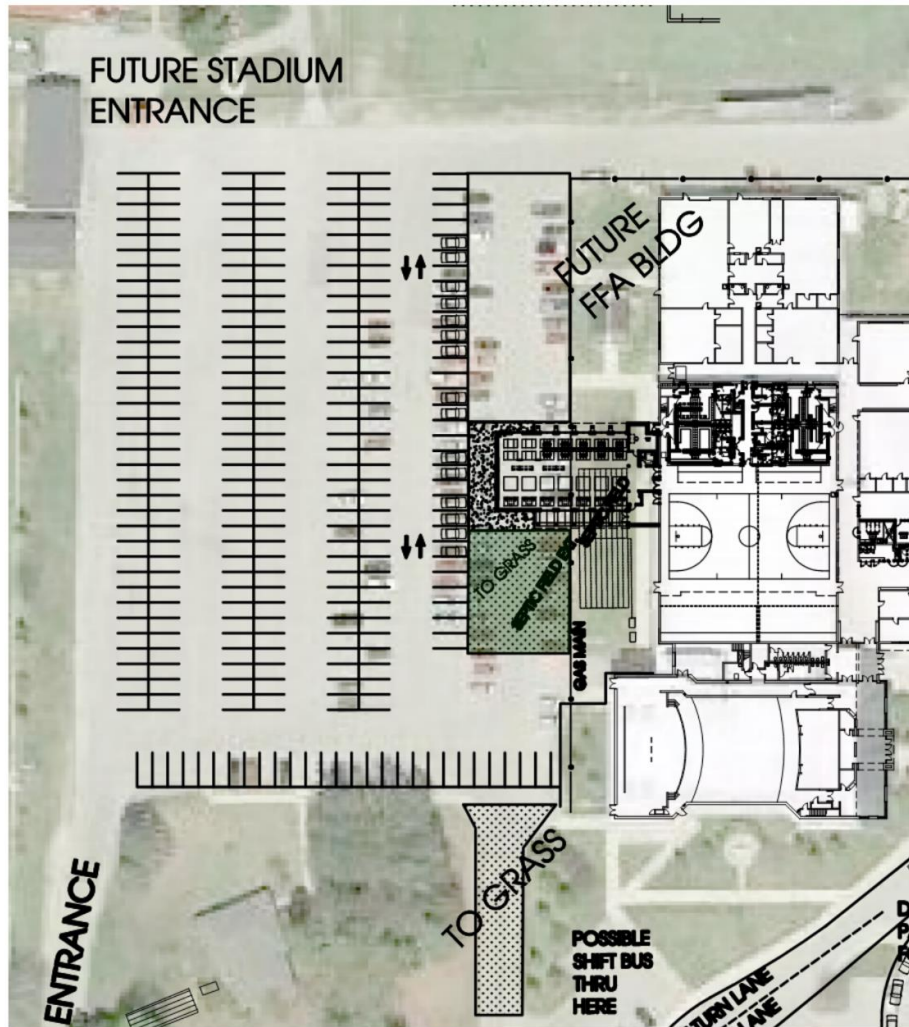


existing | addition

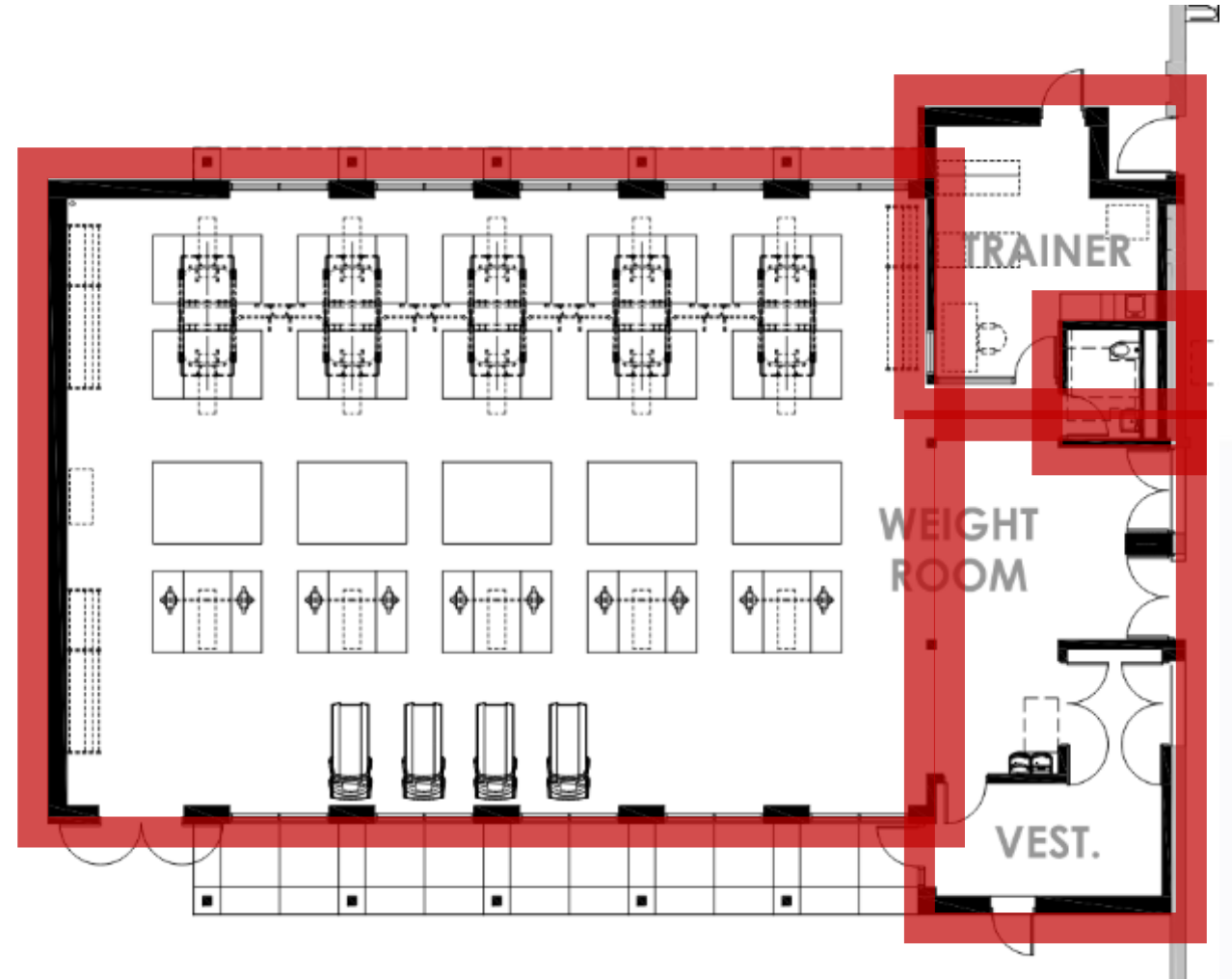
PERSPECTIVE LOOKING NORTHEAST



# HS Weight Room – Site Plan/Floor Plan

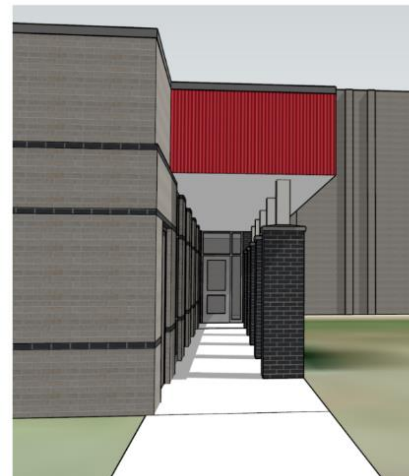


**SITE PLAN**  
NOT TO SCALE

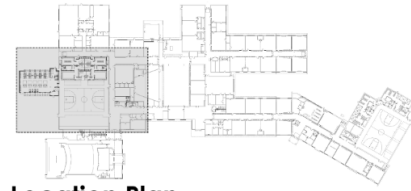


**FLOOR PLAN**  
NOT TO SCALE

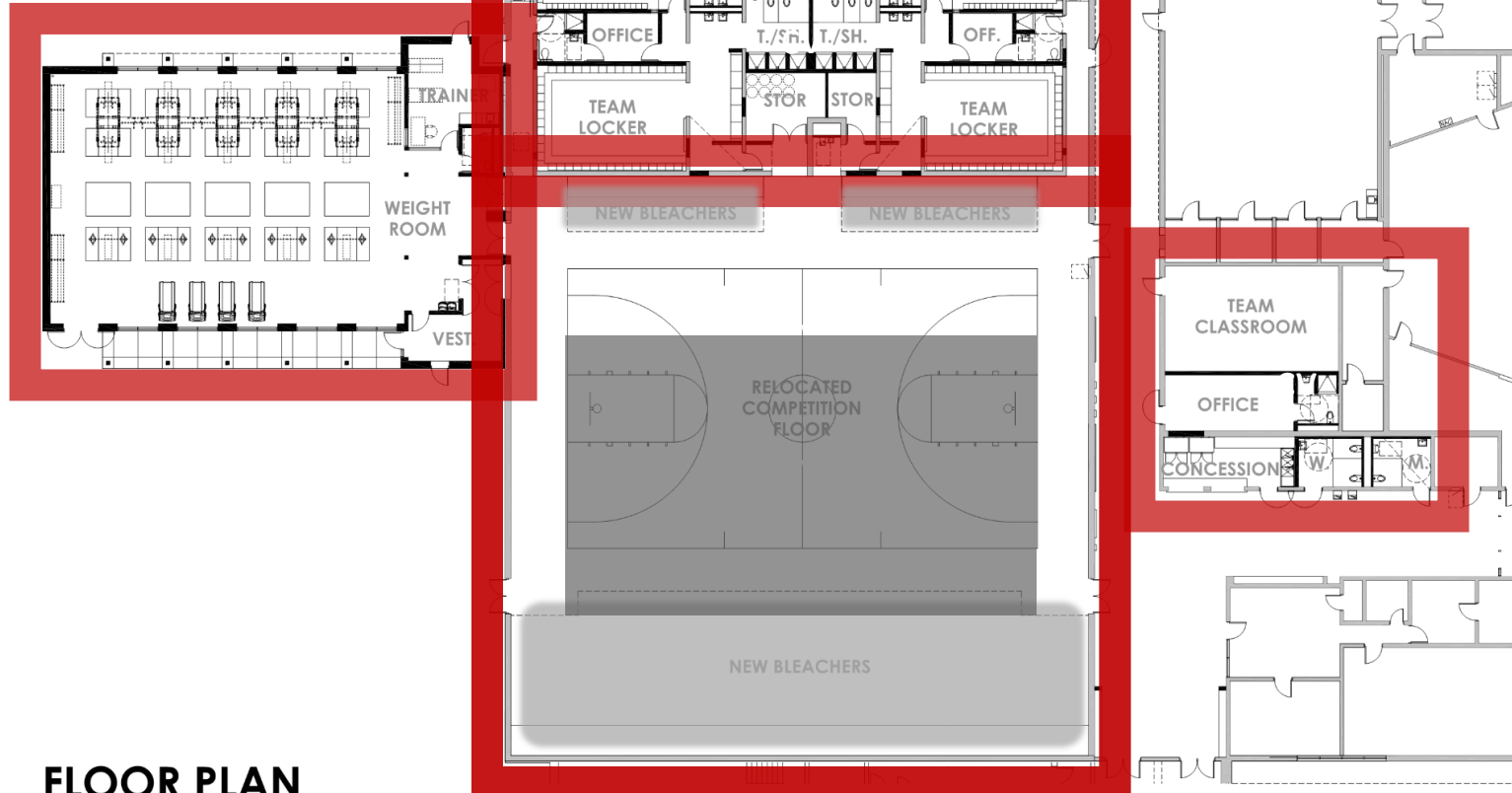
# HS Weight Room – Exterior



# Gym/Locker Room – Floor Plan



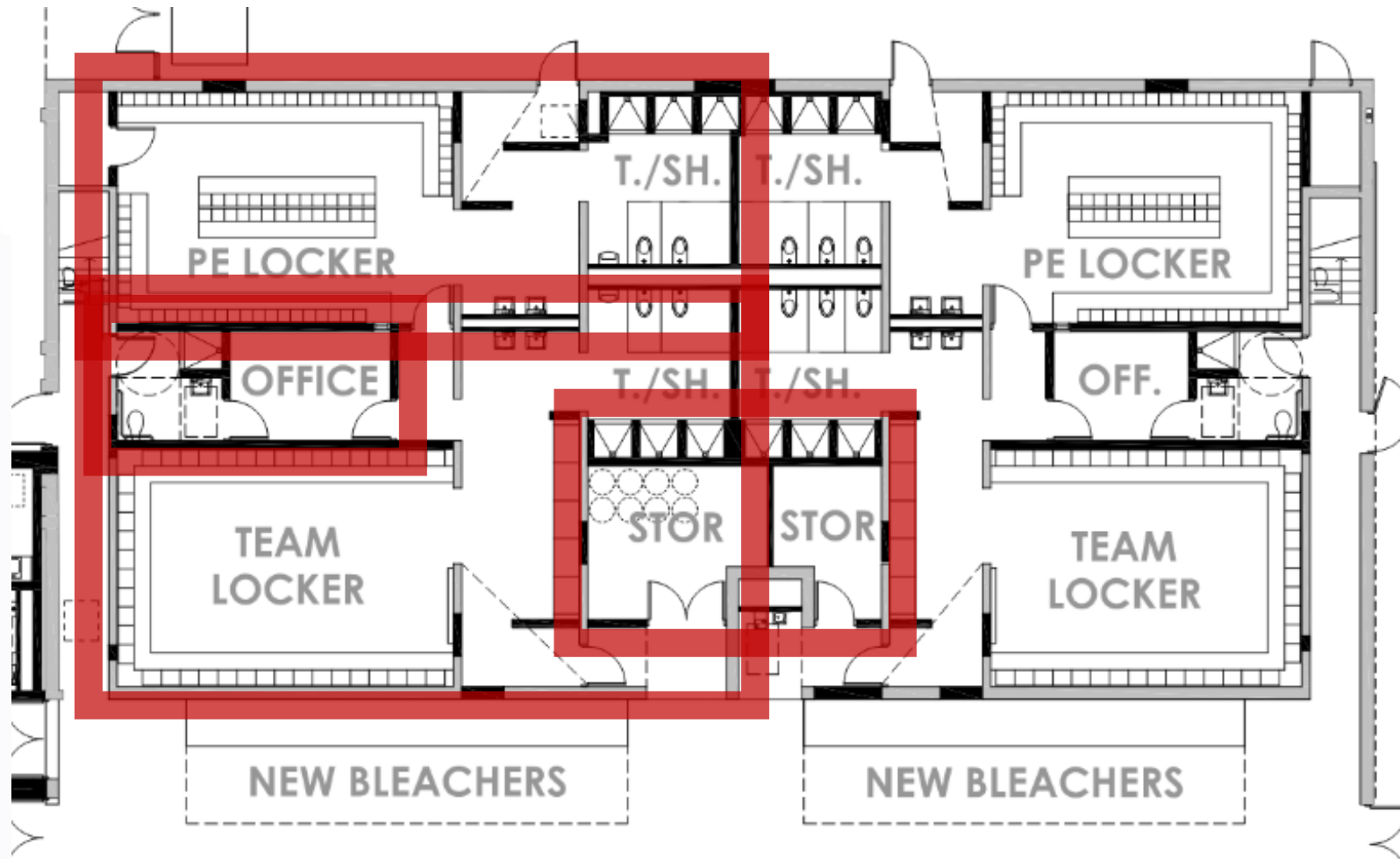
Location Plan



**FLOOR PLAN**  
NOT TO SCALE

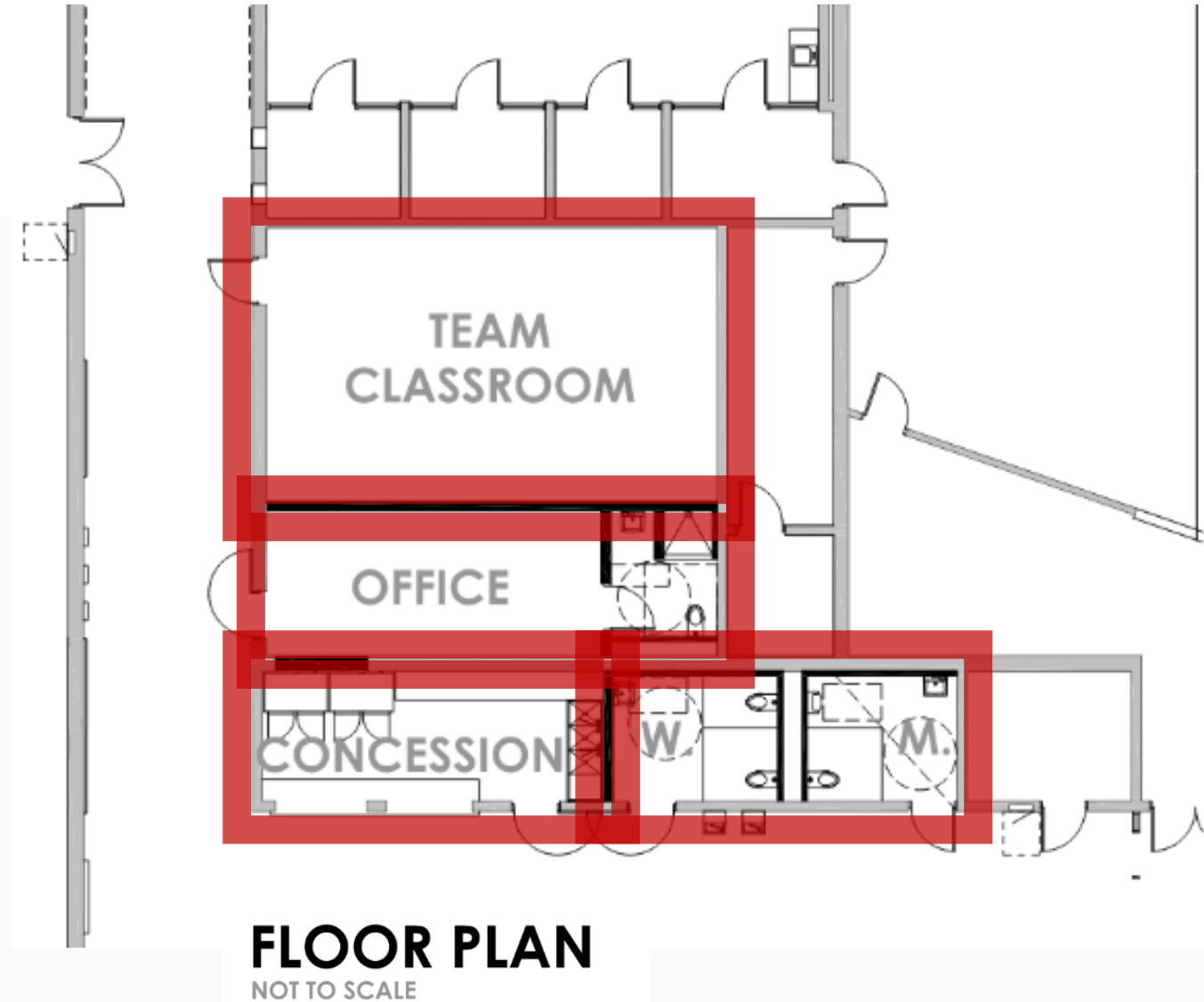


# HS Locker Room – Floor Plan

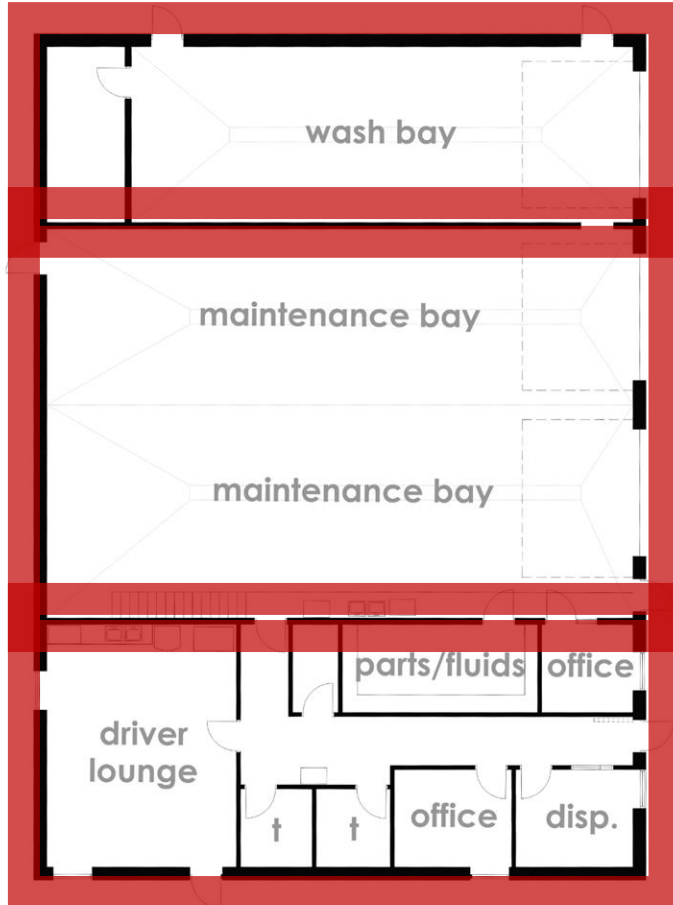


**FLOOR PLAN**  
NOT TO SCALE

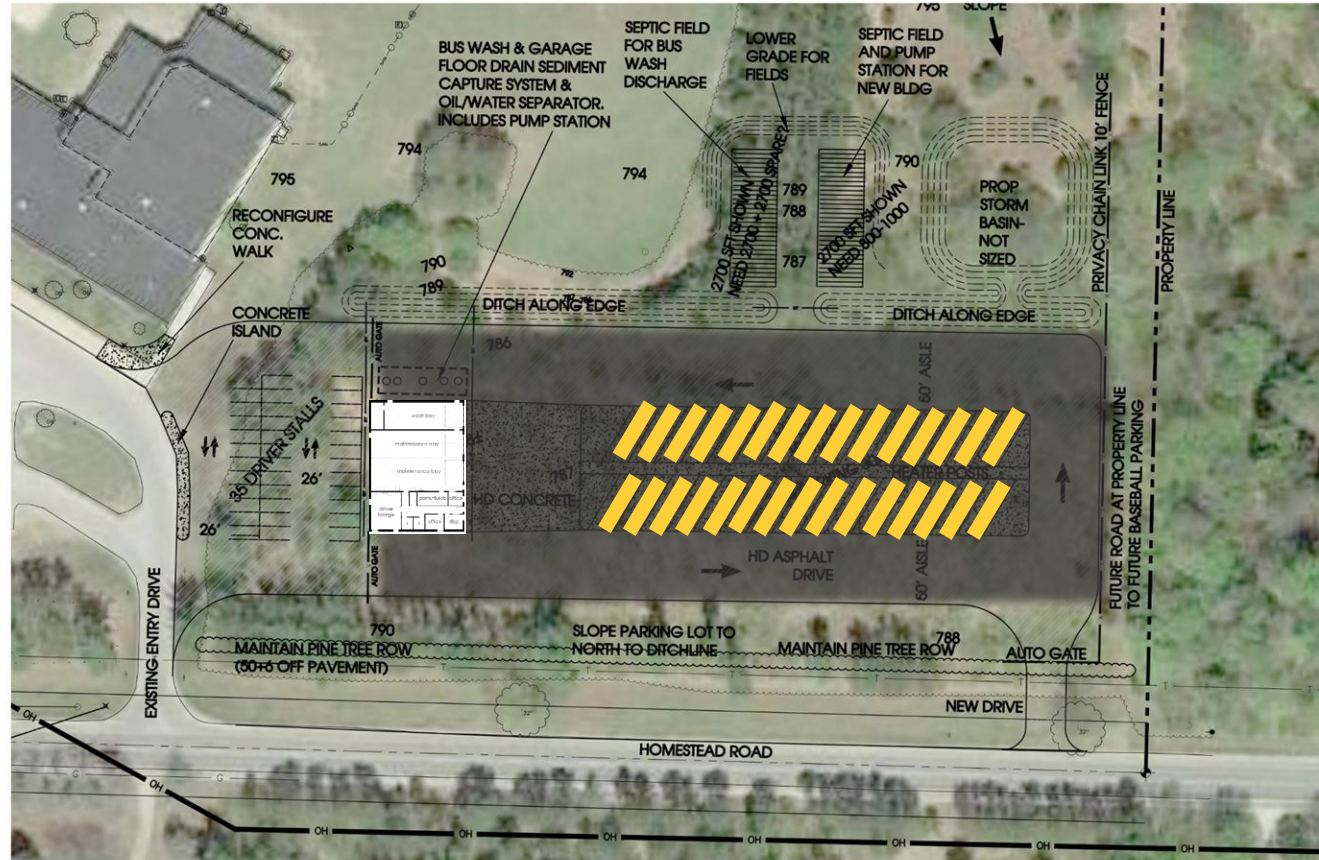
# HS Concessions – Floor Plan



# Bus Garage – Site Plan/Floor Plan



**FLOOR PLAN**  
NOT TO SCALE



**SITE PLAN**  
NOT TO SCALE



# Sinking Fund Projects Summer 2021

- \*New Middle/High School Roof (1<sup>st</sup> Bond Project)
- \*New Boilers Lake Ann
- \*New Signage Lake Ann
- \*New Parking Lot Betsie Valley
- \*New Signage Betsie Valley
- \*Upgraded LED Lighting at Stadium

# We Want YOUR Input.....

Please complete the survey by scanning  
the code



or entering the URL

<https://forms.gle/dc23PaMVxUZYGsCeA>

Thank You!

Questions?