



# LAKE ANN ELEMENTARY COMMUNITY NEWSLETTER

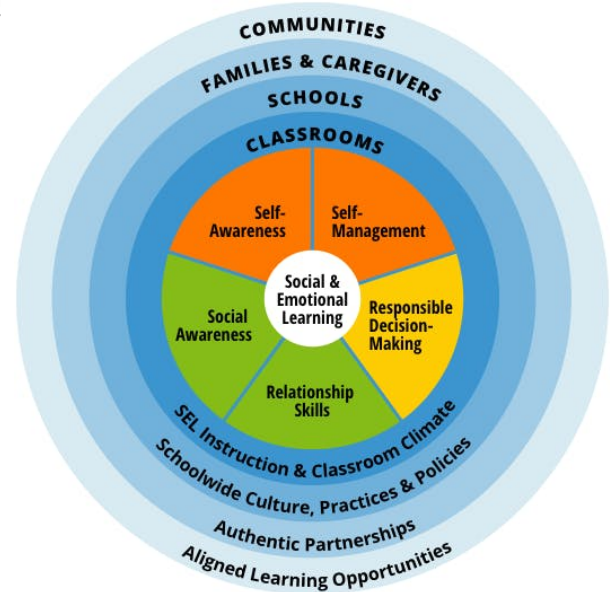
Welcome to our school newsletter! The intention of this newsletter is to keep families informed on the happenings within our school and to grow our community through productive communication and transparency.  
Happy reading!

## Social-Emotional Learning and Lifelong Skill Development

Social Emotional Learning (SEL) has a forever home at Lake Ann Elementary. Within our school, and within classrooms, we are working to build our relationship with our District provided social-emotional curriculum, Move This World. In addition, Lake Ann Elementary is committed to supporting all students with daily lessons and opportunities to blend the skills being learned and practiced within our SEL curriculum into the daily interactions our rich school environment provides to us.

The positive effects of deliberate SEL within schools has been well researched for many years and has proven to yield successful outcomes for students, school communities, and families alike. When schools place value in the social and emotional growth of our students, we begin to see the rewards of this time well spent in many ways. We see growth in the healthy relationships students build with peers and staff alike (Relationship Skills). We witness SEL success when students find themselves engaging in tricky tasks such as test taking, or, find themselves in a disagreement among friends (Self-Management and Self-Awareness).

We see SEL magic happening when a student spots another student struggling, and then offers to help without being asked (Social Awareness). Or, again, when a student knows that it is their responsibility to finish their classwork before engaging in perhaps a more preferred activity (Responsible Decision-Making).



The "CASEL wheel" helps cultivate skills and environments that advance students' learning and development.

Some of the "rewards" of students gaining strong social-emotional skills are able to be seen fairly quickly; others take time and practice. This skill building takes getting it wrong sometimes, learning from mistakes, and trying again for a better outcome. Life provides opportunities for students and adults alike to practice these skills and to perfect them over time.

The long-term rewards of SEL are also to be desired. Research has shown that students who take part in regularly planned SEL lessons, conversations, and deliberate practice, have better academic outcomes, exhibit less short-term stress and anxiety, and are more likely to find themselves in fulfilling careers, healthy relationships, and positively participating within the communities in which they live.

As shown in the CASEL Wheel above, there are many groups (the blue rings surrounding the CASEL Competencies) which

*(continued on page 2)*

## Social-Emotional Learning and Lifelong Skill Development

come together to make this amazing growth possible within our students!

Within our school environment, the expectation is that all classroom teachers are presenting Move This World each and everyday. Lessons take approximately 8-10 minutes to complete, with the goal of keeping the SEL conversations happening throughout the day as opportunities arise.

Lake Ann Elementary is also pleased to extend the SEL learning happening within our classrooms, into a schoolwide effort with our "Caught You Being Great" Schoolwide Practices (also found within the blue rings of the CASEL 5 Wheel). This program works in two ways: 1) staff are encouraged to recognize students for their work around SEL by "catching" them practicing one (or more) of the CASEL 5 Competencies listed in orange, yellow and green on the previous page. Once 'caught', staff fills out a colorful slip, lists the specific example in writing, and circles a corresponding competency. These are then put on display in our glass cabinet in the main entrance for the week; every Friday a random draw is completed where 10 students have their slip read over the school announcements, and they then come to the office to collect a small prize, grab a free popcorn, and have a group photo taken!

Secondly, our school celebrates all students and their growth towards SEL mastery through our Monthly "Caught You Being Great" All-School Assembly. By now, the majority of our LA families have been able to experience their student being selected for this SEL award either during the 22-23 school or perhaps this year already! This is a moment for us to publicly acknowledge each and every student for the uniqueness they bring to our school community. As we work to grow this Schoolwide Culture and SEL recognition practice, new to our monthly celebration is a moment for an all-school SEL Move This World Power of Pause where we practice together a selected breathing technique to encourage Self-Management skill building. Also, to increase the amount of community building within our school around the celebration of SEL and all students, we are now hosting a post-assembly Celebration Breakfast, where all recognized students and their special guests are invited to take part in a light breakfast and extra time to honor your special student!

With all of this wonderful work occurring within our walls at Lake Ann Elementary, I'd like to encourage you to check out the digital family resources available to you at home through our school SEL curriculum, Move This World.

**Your LA principal and partner in education,  
Rachel Anderson**



### Family SEL Resources

Log In: lakeann.family

Password: movethisworld

Website: SEL.Movethisworld.com



## Monthly Classroom Lessons with Deputy Maul and Therapy Dog, Briggs

### **February Lesson Topic:**

K-5: Lake Ann Elementary Foundations Responsible, Respectful, and Safe



**Welcome! LA School Nurse,  
Rudy Strickland**



Greetings, Lake Ann Elementary! School nurse, Rudy Strickland, at your service. As a second career, nursing is my calling and it's a privilege to be here to support the students and staff. Though trained as a critical care nurse, my main goal in becoming a nurse was to give back to my community. As a Benzie County native, I am happy to be able to achieve that goal by helping the youth and families right here in my community. I am here to assist with the students and staff with health education, staff trainings, medicine administration procedures and compliance, assisting with chronic condition health plans according to physician orders and general support.

In addition to my role as a school nurse I am also the Children's Special Healthcare Service Nurse for Benzie County, which means I assist with supporting chronic conditions in children.

I look forward to meeting the students and families. Please reach out if you have any questions. Work phone that is answered weekdays from 8:00-4:30, 231-871-8884.



## LA's February Calendar of Events

2/2: End of winter benchmark testing

2/2: Popcorn Day! .50 per bag

2/6: Deputy Maul at LA for monthly classroom lessons

2/9: Popcorn Day! .50 per bag

2/12: Board of Education Meeting, MS/HS @7:00

2/13: Monthly LA PTO Meeting, library @4:30

2/16: Half Day of school, dismissal at 11:50

2/19: No School

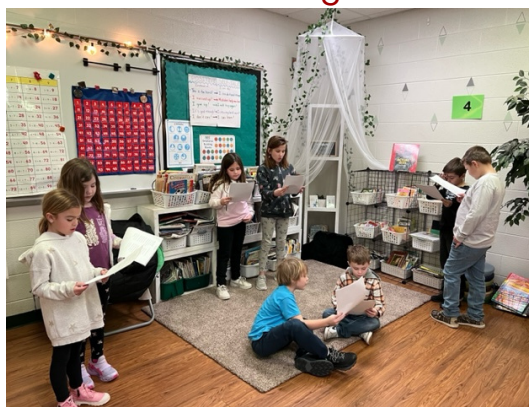
2/24: LA All School Winter Ball! MS/HS Cafeteria from 6pm-8pm, tickets on sale!

## Celebrating February Birthdays!

Kaia K. 2/1  
Skyler B. 2/6  
Brooklyn B. 2/8  
Sullivan J. 2/8  
Aiden R. 2/9  
Ryker. H. 2/12  
Maddox P. 2/12  
Isaiah W. 2/13  
Michael G. 2/14  
Maxwell R. 2/17  
William S. 2/19  
Willo S. 2/19  
Sterling G. 2/22  
Nolan S. 2/29



## 2nd and 3rd Grade Working Hard on Reading!



Mrs. Roper's 2nd and 3rd grade students strengthening their fluency with Readers Theater scripts for two voices.

## January's 'Caught You Being Great' Monthly SEL Assembly Award Winners!



## 4th Grade Celebrating End of Testing!



Mrs. Pfeuffer and her 4th graders popped popcorn and played games, including musical chairs, to celebrate completing the winter NWEA benchmark testing!



Please continue to send your student with all of these items on a daily basis:

- Snow pants
- Winter coat
- Hat and gloves
- Winter boots
- Tennis shoes for Physical Education class



# Lake Ann PTO

## Upcoming Events

### February:

2: Popcorn Friday  
9: Popcorn Friday  
13: PTO Meeting @ 4:30  
23: Popcorn Friday  
24: Winter Ball 6-8pm

### March

1: Popcorn Friday  
4: Start of Read a Thon  
(through April 8th)  
8: Popcorn Friday  
12: PTO Meeting @ 4:30  
15: Popcorn Friday

### April

5: Popcorn Friday  
8: End of Read a thon  
8-12: Scholastic Bookfair  
9: PTO Meeting @ 4:30  
12: Marking Period Ends-  
Staff Appreciation  
12: Popcorn Friday  
19: Popcorn Friday

### May

3: Popcorn Friday  
6-10: Teacher  
Appreciation Week  
10: Popcorn Friday  
17: Popcorn Friday  
31: LAST POPCORN  
FRIDAY  
TBD: Spring Carnival

\* Dates (including PTO meetings) are subject to change

One of the main goals of the LAE PTO is to provide the students with experiences that help enrich the education they receive from Lake Ann Elementary. The biggest way that we accomplish this is by insuring that the students do not pay for field trips. In order to continue with this, we need your help. We are always looking for local families and businesses to sponsor events, games, popcorn Fridays, etc. LAE PTO is a 501(c)3 nonprofit and all donations are tax deductible.

As you can see from the updated list of events, the PTO has a busy second half of the year planned. Along with every event, we are in the need of volunteers. Not only are volunteers needed for the event itself, but also in planning and organizing. This is a great way to get involved with LAE and we would love to have you.

Although we find value and enjoyment in all of these events, if we cannot gather more community support and volunteers, we may have to begin eliminating some activities.

If you or another community member are interested in volunteering or sponsorship, please email [lakeannelementarypto@gmail.com](mailto:lakeannelementarypto@gmail.com). Current background checks are required for volunteering.

We have had such an amazing start of the year and we cannot begin to express how much we love working with the teachers and staff to create fun and exciting experiences for your kiddos.

Sincerely, Your LAE PTO Officers,  
Ashley Collier  
Dibiangie Craig  
Natalie Gawlik  
Tori Guzinski